

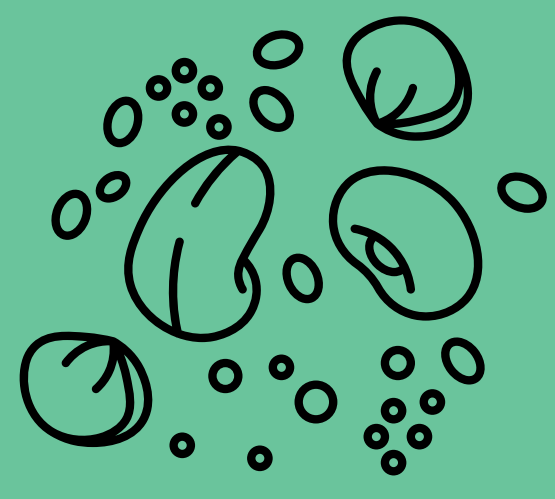
the FIELD VOLE

FACTS ABOUT ME
WE ARE ONE OF THE UK'S
MOST COMMON MAMMAL
WITH A POPULATION OF 75
THOUSAND

LLYGODEN Y GWAIR in Welsh

MY FAVOURITE FOOD

SEEDS, ROOTS AND LEAVES



I AM
AROUND
10CM
LONG



I
AM ACTIVE
DAY AND
NIGHT AND
CAN BE FOUND
ALL YEAR
ROUND

ME
IN
THE
WILD



LIKES

I LIKE TO MOVE
THROUGH THE
GROUND TO A
NETWORK OF WELL-
USED RUNS THAT LEAD
TO THEIR BURROWS

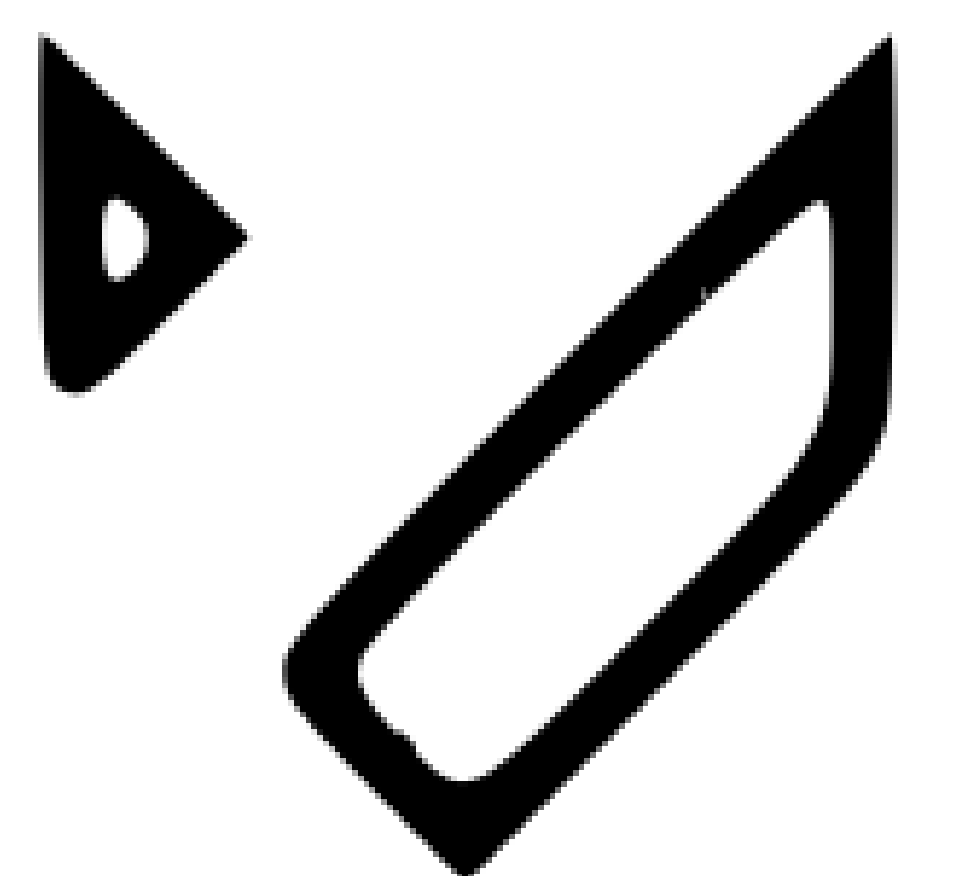
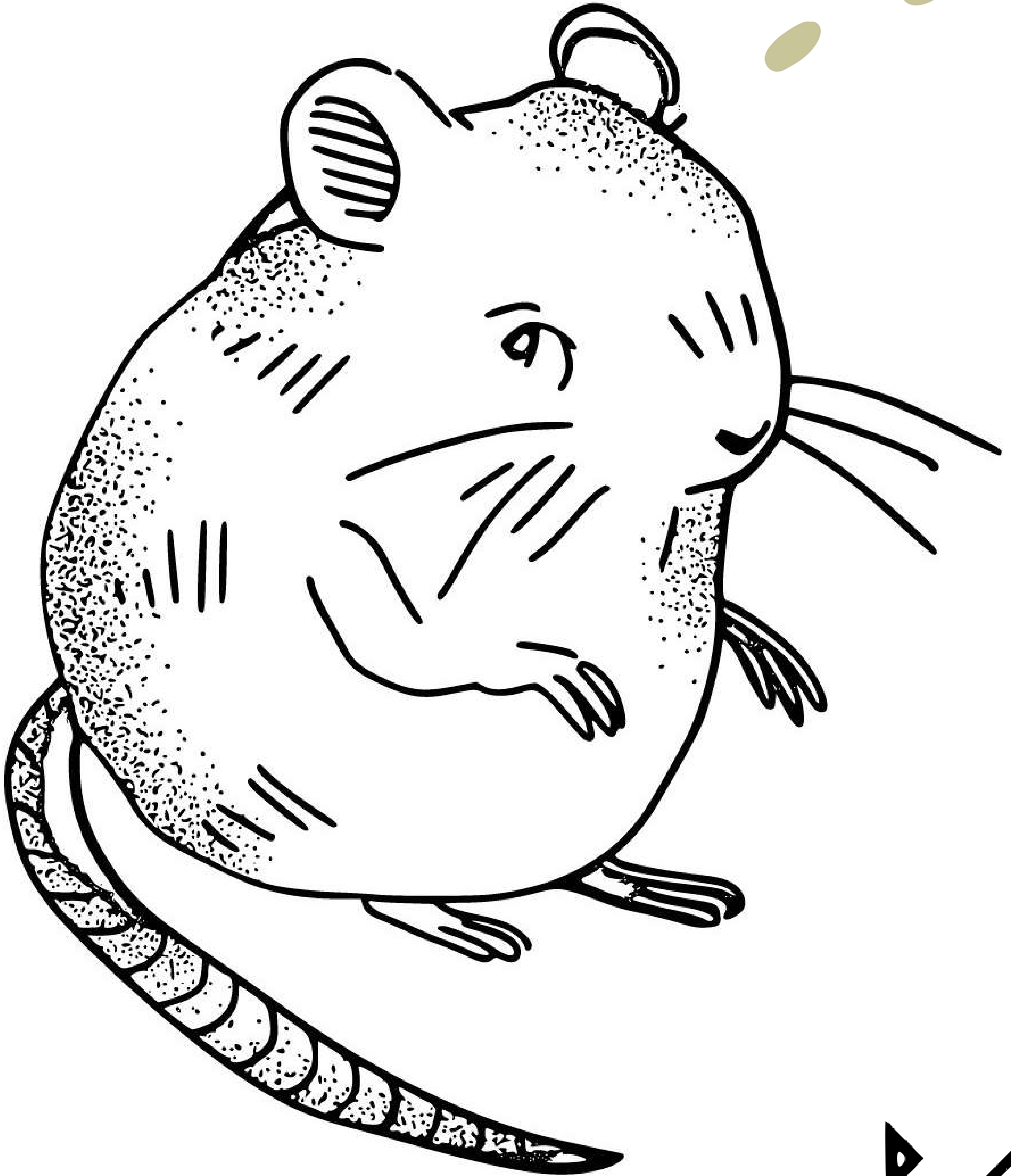
DISLIKES

I HAVE MANY
PREDATORS WHICH
INCLUDE KESTRELS,
WEASELS AND BARN
OWLS

the

FIELD VOLE

LLYGODEN Y GWAIR in Welsh



the

COMMON TOAD

LLYFFANT CYFFREDIN in Welsh

FACTS ABOUT ME

I HAVE A BROAD BODY AND WARTY SKIN AND WALK RATHER THAN HOP

DURING THE WINTER, I SPEND MUCH OF THE TIME IN BURROWS, UNDER LOG PILES OR IN STONE PILES

MY FAVOURITE FOOD INSECTS, SPIDERS, SLUGS AND WORMS. LARGER TOADS MAY TAKE SLOW WORMS, SMALL GRASS SNAKES AND HARVEST MICE



FEMALES LAY THEIR EGGS IN PONDS IN LONG, DOUBLE STRANDS, PROTECTED IN JELLY, KNOWN AS TOAD SPAWN

I PUFF MYSELF UP AND CAN RELEASE A HORRID TASTING SUBSTANCE FROM MY WARTS TO DETER PREDATORS



LIKES

I LIKE TO LIVE IN MEADOWS, WOODLAND AREAS, FLOWER BORDERS, HEDGES AND LOG PILES

DISLIKES

I DON'T LIKE MY PREDATORS WHICH INCLUDE HEDGEHOGS, BIRDS OF PREY, OTTERS AND GRASS SNAKES

ME IN THE WILD



the

COMMON TOAD

LLYFFANT CYFFREDIN in Welsh

